

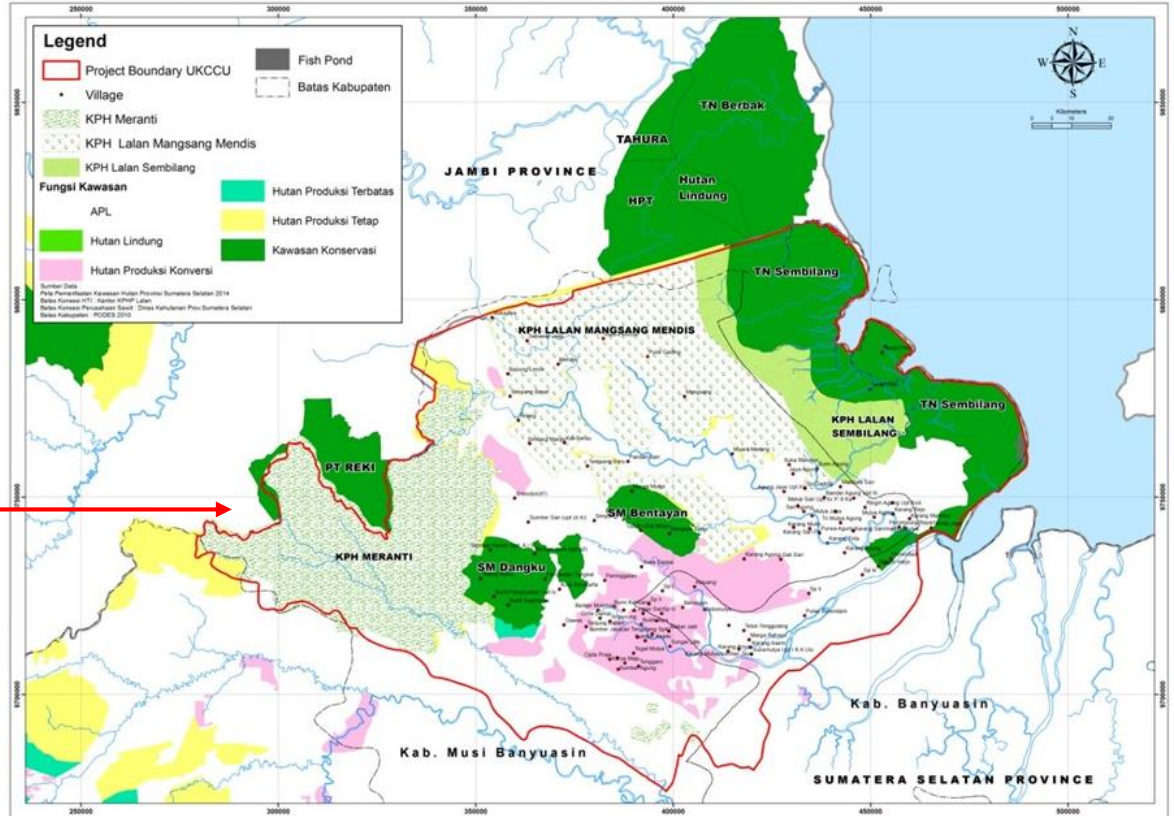
GHG Mitigation through Sustainable Landscape Management in South Sumatera

Prepared by:
KELOLA Sendang Project

Bali, Agustus 2017



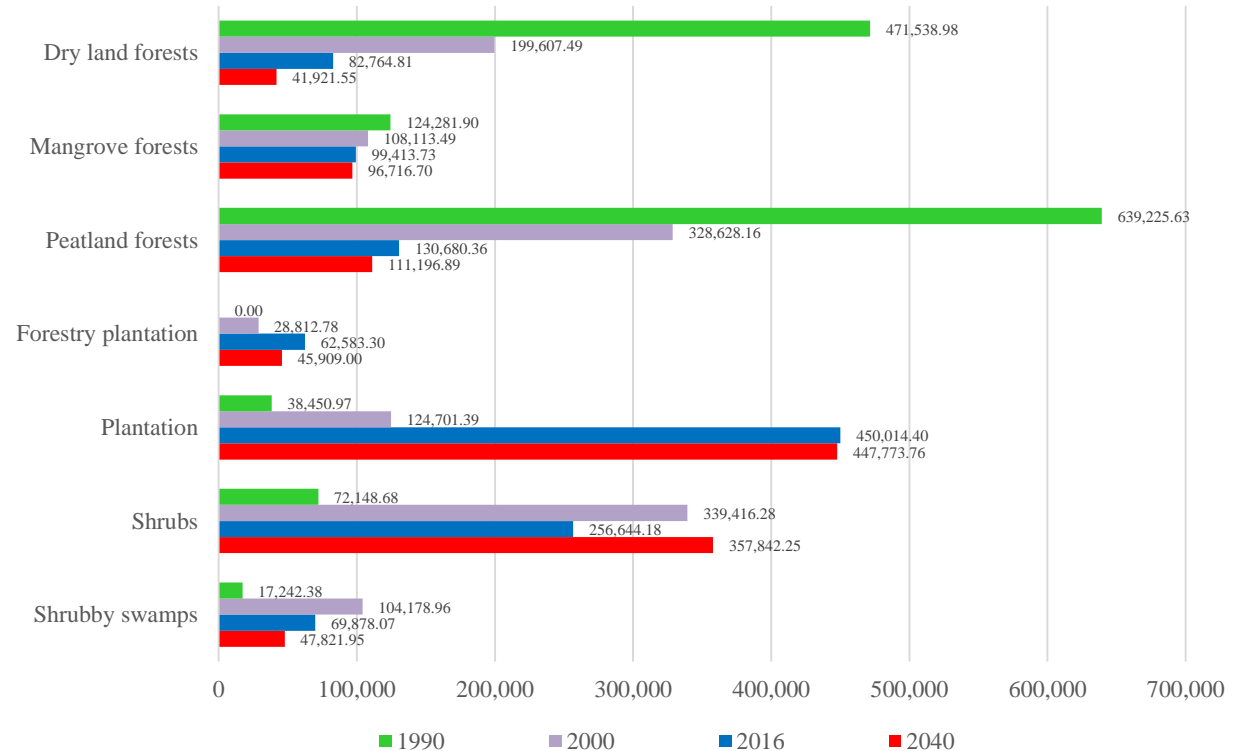
KELOLA SENDANG PROJECT



GHG EMISSION IN SEMBILANG-DANGKU LANDSCAPE



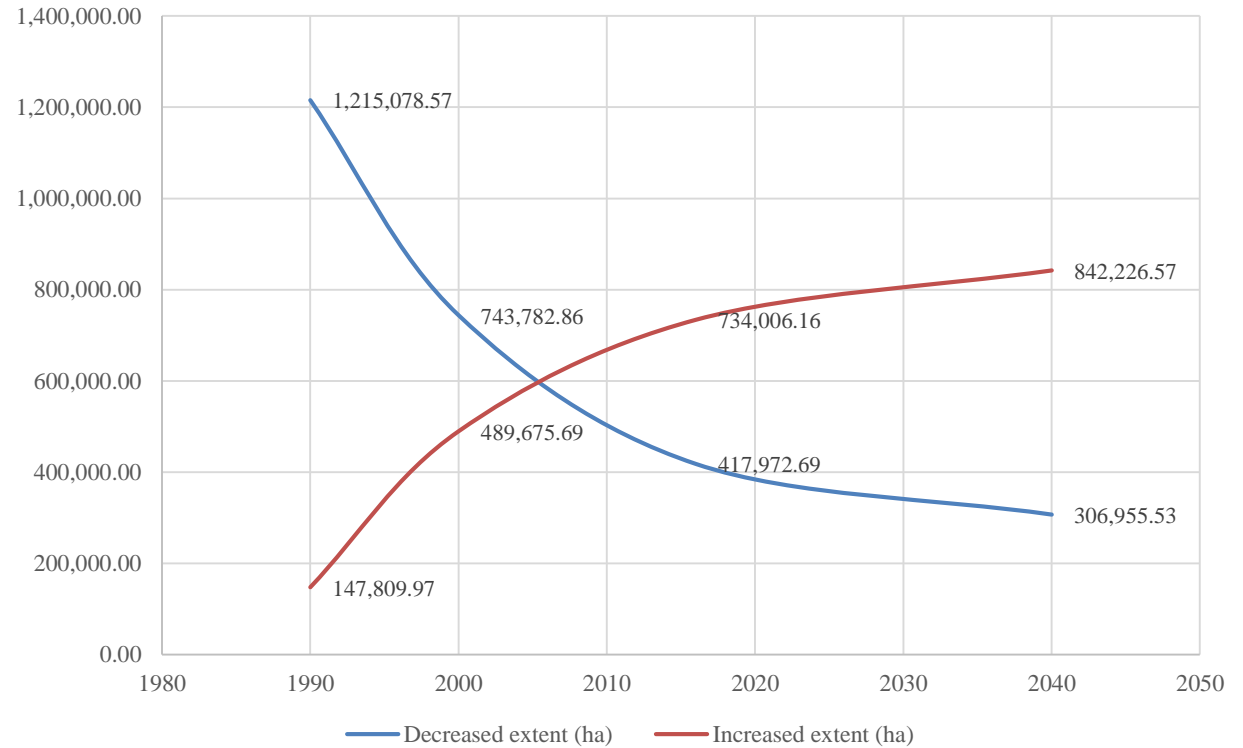
- Land Use Land Cover Change Over Time**



GHG EMISSION IN SEMBILANG-DANGKU LANDSCAPE



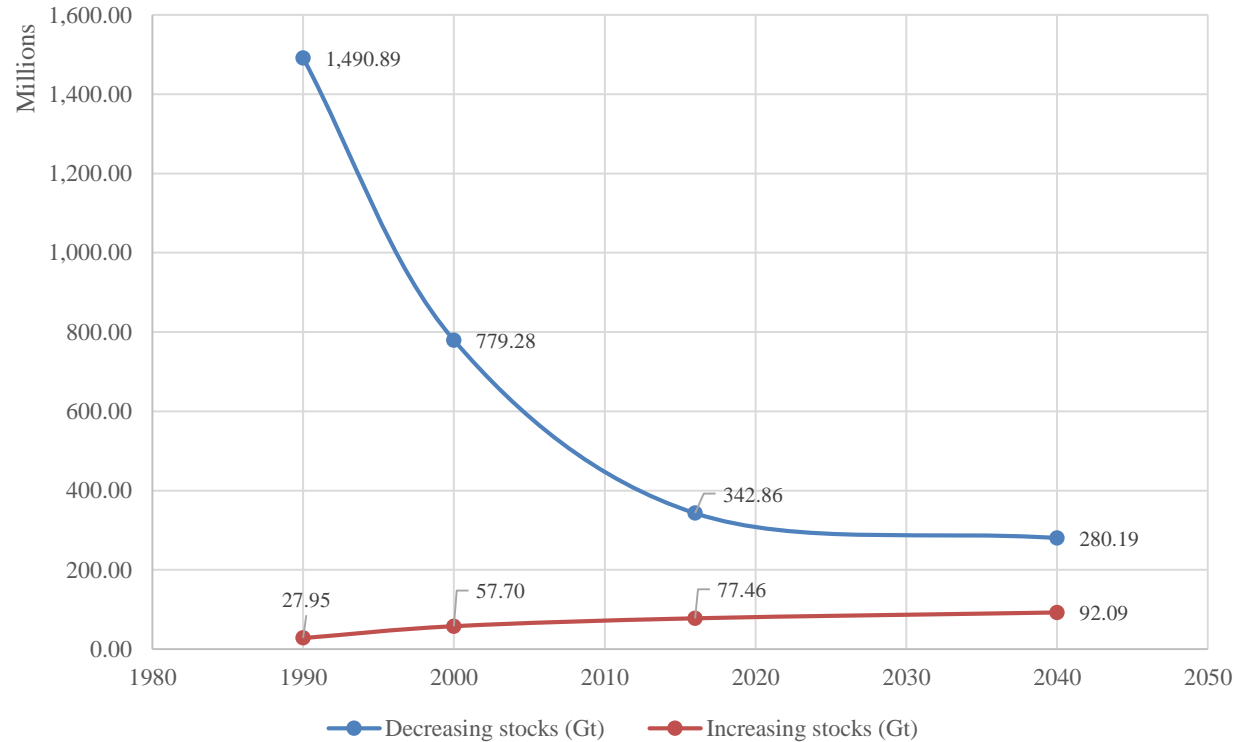
- **The dynamics of land uses in the landscape**



GHG EMISSION IN SEMBILANG-DANGKU LANDSCAPE



- **Predictive CO2 Emission Over Time and Its Economic Values**



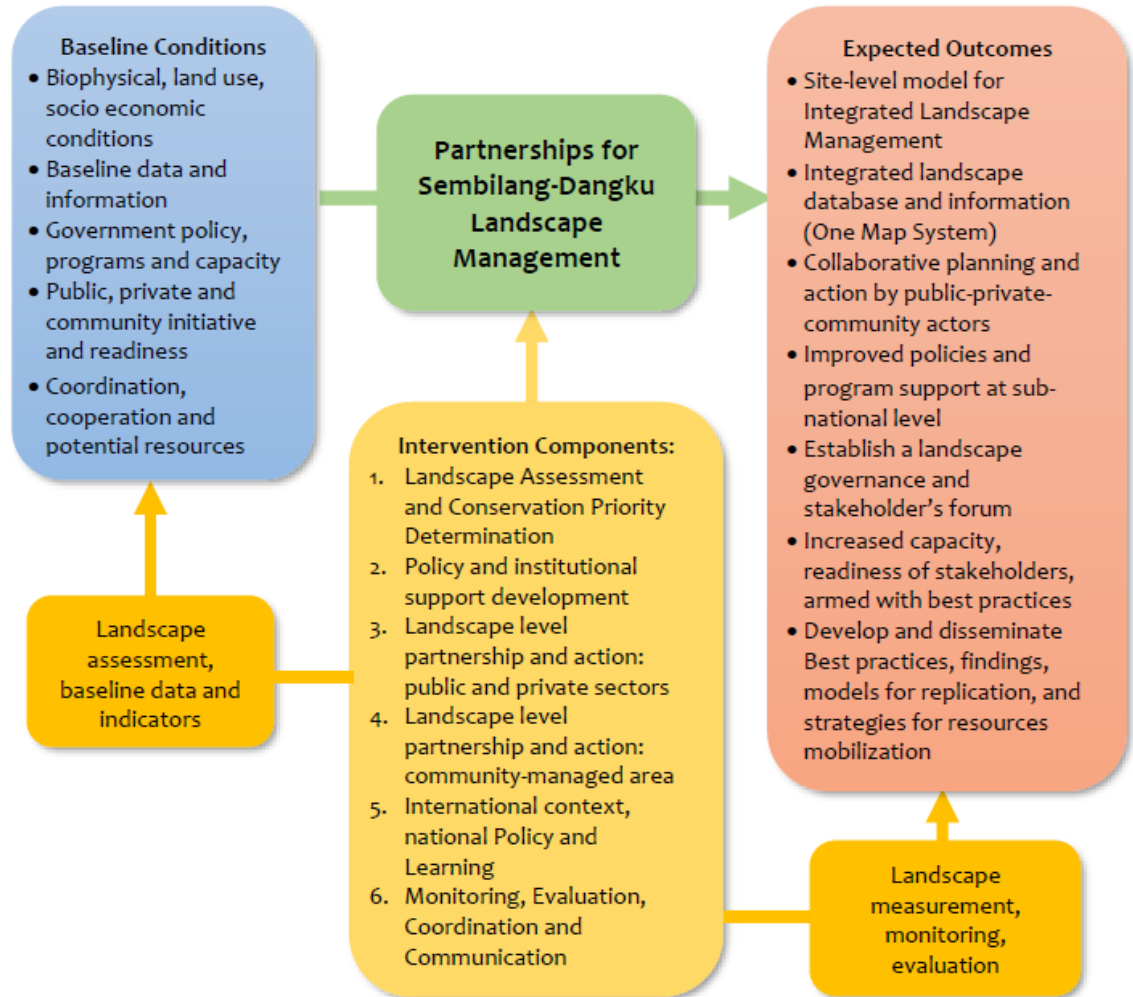
GHG EMISSION IN SEMBILANG-DANGKU LANDSCAPE



- **Economic values of carbon sequestration (USD) in the landscape for the period of 2016 and predicted 2040**

	2016	2040
Carbon debit (USD)	685,716,117.25	560,374,404.64
Carbon credit (USD)	154,929,452.04	184,176,466.72
Carbon balance (USD)	- 530,786,665.21	- 376,197,937.92

KELOLA Sendang Framework



CHALLENGES IN SUSTAINABLE LANDSCAPE MANAGEMENT



Shames et al. (2017) identified the policy barriers to integrated landscape management:

- Sectorally-siloed government planning and decision-making
- Limitations on landscape negotiation processes
- Counter-productive fiscal and policy incentives for land and resource management

Multi-stakeholder landscape management needs a stronger collaboration among governments, business, and NGOs, which will increase the incentives for improving the sustainable economy (Cheng 2016).

CONCLUDING REMARKS: SEEDS FOR SUCCESS



- The commitment of local governments (provincial and districts, and public sectors) to sustainable landscape-based green growth is admittedly high
- Private sectors in this landscape have also expressed their commitment to sustainable green growth, but to some extent, this has been a cunning business to deal with
- Pilot villages are willing to participate in such a participatory landscape management.

Terima
kasih !

